



21 Clydesdale Mount, Newcastle Upon Tyne, NE6 2EN

Offers Over £105,000

Hive Estates are delighted to present to the market this lovely two-bedroom terraced home located on Clydesdale Mount in Byker, a quiet residential street benefiting from both front and rear garden space and offering excellent kerb appeal.

The spacious and bright living room spans the full length of the property, featuring a large front facing window and patio doors leading to the rear garden, allowing plenty of natural light to flood the space. The room is neutrally decorated with beige carpeting, a feature fireplace, a useful storage cupboard, and ample space for both living and dining furniture. The kitchen offers a good range of wood effect wall and base units with black worktops, an integrated oven and hob, tiled flooring, and plenty of space for freestanding appliances.

The principal bedroom is a generous double room, finished with neutral decor and beige carpeting. Large windows create a bright atmosphere, while built-in sliding door wardrobes spanning an entire wall provide excellent storage. The second bedroom is slightly smaller but mirrors the décor of the main bedroom and would be ideal as a nursery, home office, dressing room, or guest bedroom. The bathroom is finished with floor to ceiling white marble effect tiling, complemented by a decorative feature border. It comprises a walk-in shower, vanity wash basin with storage, and WC.

Externally, the front garden features well maintained flower beds and steps leading to the entrance, creating an attractive and low maintenance outdoor space. To the rear, there is a decked seating area with steps leading down to a gravelled garden, offering a low-maintenance setting with potential for additional planting or landscaping. The garden enjoys a sunny west-facing aspect, taking full advantage of impressive views over the River Tyne, St James' Park, and the wider Newcastle skyline, creating an ideal space for relaxing and entertaining. Ideally situated close to a range of local shops, excellent transport links, and Welbeck Academy, this property would make an ideal first-time purchase or investment opportunity.

Lounge/Diner 15'8" x 11'1" (4.80 x 3.39)

Kitchen 9'6" x 6'8" (2.90 x 2.05)

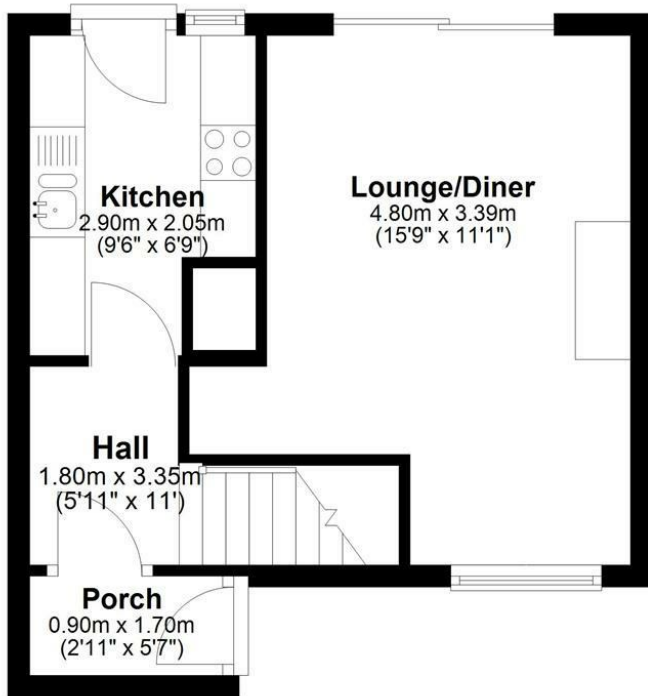
Bedroom 1 6'6" x 10'5" (2.00 x 3.20)

Bedroom 2 9'10" x 7'0" (3.00 x 2.15)

Shower Room 6'6" x 5'6" (2.00 x 1.70)

Ground Floor

Approx. 27.9 sq. metres (299.9 sq. feet)



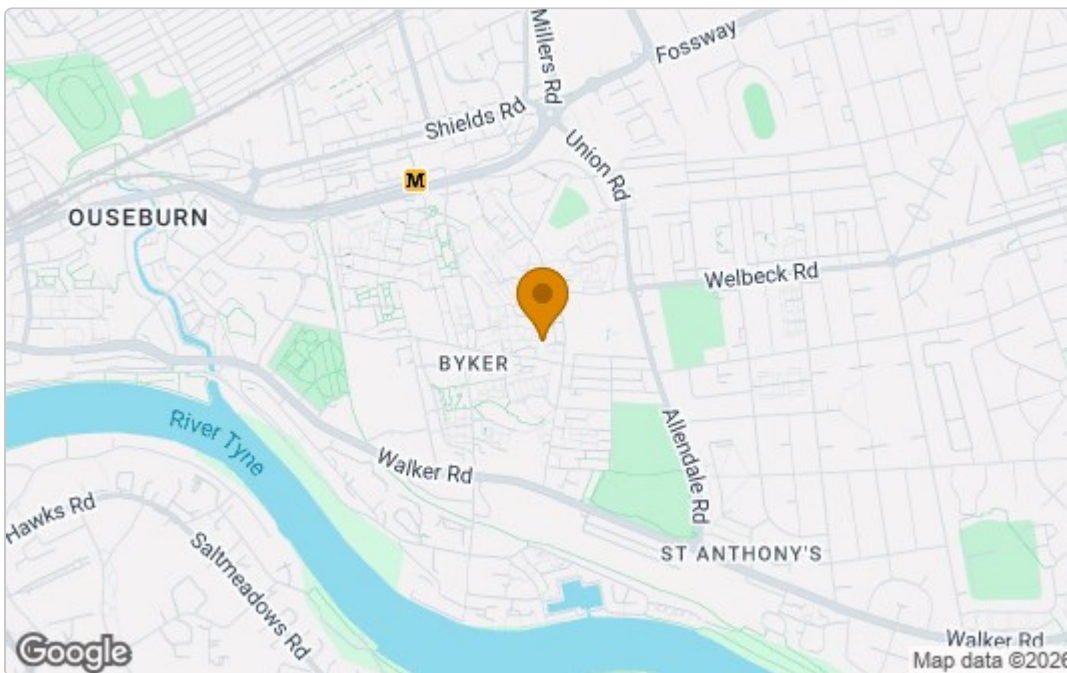
First Floor

Approx. 26.2 sq. metres (281.6 sq. feet)



Total area: approx. 54.0 sq. metres (581.5 sq. feet)

Area Map



Energy Efficiency Graph

Energy Efficiency Rating		Current	Potential
Very energy efficient - lower running costs			
(92 plus) A			88
(81-91) B			
(69-80) C		72	
(55-68) D			
(39-54) E			
(21-38) F			
(1-20) G			
Not energy efficient - higher running costs			
England & Wales		EU Directive 2002/91/EC	
Environmental Impact (CO ₂) Rating		Current	Potential
Very environmentally friendly - lower CO ₂ emissions			
(92 plus) A			
(81-91) B			
(69-80) C			
(55-68) D			
(39-54) E			
(21-38) F			
(1-20) G			
Not environmentally friendly - higher CO ₂ emissions			
England & Wales		EU Directive 2002/91/EC	

These particulars, whilst believed to be accurate are set out as a general outline only for guidance and do not constitute any part of an offer or contract. Intending purchasers should not rely on them as statements of representation of fact, but must satisfy themselves by inspection or otherwise as to their accuracy. No person in this firm's employment has the authority to make or give any representation or warranty in respect of the property.